

# *-Reading Lab-*

HELENA HIGH SCHOOL: 2021-2022

## *- Course -* DESCRIPTION

Reading Lab is designed to directly address individual needs for students to help them gain the strategies to increase reading comprehension.

Reading Lab students will utilize the intensive reading intervention program Read 180. Read 180 curriculum employs adaptive and instructional software, high-interest literature, and direct instruction in reading and writing skills.

A variety of supplemental novels and instruction will be utilized to enhance the Read 180 curriculum to meet the needs of each individual student.



## CONTACT INFORMATION

***Mrs. Katie Hillock***

Special Education/English Teacher  
Helena High School: RM 16  
406-794-3217  
khillock@helenaschools.org

## CLASSROOM & BENGAL - *- Expectations -*

Students are expected to follow classroom rules and procedures as well as school-wide policies for behavior.

### *- Be Respectful -*

- Honor the opinions and beliefs of others.
- NO PERSONAL ELECTRONIC DEVICE USAGE IN CLASS.
- Food and drink (other than water with a lid) is not permitted in the classroom.
- Treat the classroom and its contents with care.
- Classroom materials, including novels, are not permitted to leave the classroom.
- Hoods are not permitted to be worn up in the classroom.

### *- Be Responsible -*

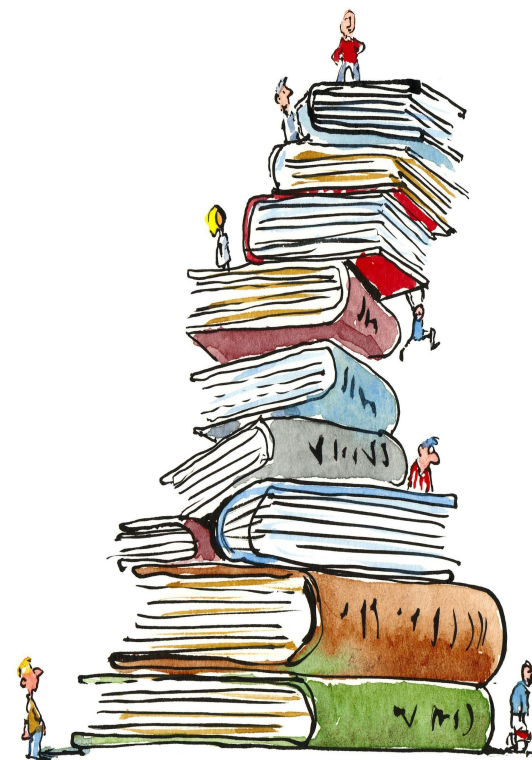
- Arrive on time and be prepared.
- Ask for assistance if you do not understand what is expected of you in class or on an assignment.
- Use the restroom between classes. Each student will receive 5 restroom passes per semester.
- Absences: It is YOUR responsibility to see me about makeup work.



## *- Be Involved -*

- Contribute to Whole and Small Group discussions.
- Help others if you see someone is in need of assistance.
- If you have questions about school-related activities & clubs, please do not hesitate to ask.

# GO BENGALS!



# HHS READING LAB 2021-2022

## - *Be a Graduate* -

How will you be graded in reading lab?

Three components dictate your grade in Reading Lab:

- 1) Whole & Small Group
- 2) Independent Reading
- 3) Student Application Software.

### WHOLE & - SMALL GROUP - *Component One*

As a class and in small groups, we will complete various assignments, projects, and tasks.

- Point values will vary based on the length of time and level of difficulty involved.
- Note that ALL work is completed in Reading Lab and will stay in the classroom.
- There is NO HOMEWORK for Reading Lab. Ensure you use class-time wisely.
- Be present. Good attendance is essential to your success and reading growth.

### STUDENT APPLICATION - SOFTWARE - *Component Two*

- Three 20-minute sessions will be completed each week in Reading Lab
- Each session is worth 20 points which are entered in the grade book weekly.
- *Cumulative* scores for performance will be entered throughout the semester as follows:

SPELLING ZONE  
(25 Points)

VOCABULARY  
(50 Points)

COMPREHENSION  
(50 Points)

FLUENCY

-3 segments completed-  
(100 Points)

### INDEPENDENT - READING -

#### *Component Three*

### INDEPENDENT READING - Weekly Sessions -

- Students read a book in "just-right" range (100 Lexile points below - 50 Lexile points above most recent RI score).
- Two to three 20-minute independent reading sessions assigned weekly during class time.
- Students complete written responses regarding their reading weekly.

### COMPREHENSION

- Semester Goal (20 Reading Counts Quiz Point minimum):
- 70% to earn a passing score
- Students may take quizzes up to 3 times
- Books and study guides may be used during quiz
- Each book is assigned a point value based on its length and level of difficulty.

### FINAL BOOK PROJECT - Semester Project -

- Students will complete a book project near the end of each semester
- Project will be assigned at the beginning of 2nd and 4th quarters
- Project will be completed utilizing a novel that the student read for his/her independent reading selection throughout the semester.
- Students must successfully pass a Reading Counts Quiz with a 70% or higher and there must be evidence that he/she utilized class time to read his/her selection.



*I have read and understand the requirements and expectations of this class and its associated course work.*

\_\_\_\_\_  
Student Name (Printed)

\_\_\_\_\_  
Student Signature/Date

\_\_\_\_\_  
Parent Signature/Date